

NICK KIRSHNER

Property & Livestock

12TH AUGUST 2023 | MOONBAH NSW 2627 | COMMENCING AT 9AM

A great day out at the Moonbah clearing sale!!! The day started under greyish clouds and stayed relatively cool but it didn't dampen the enthusiasm of the crowd for a mid winter sale. There were 88 registered bidders with many more just coming along for the social day out. Our two auctioneers Aaron Mackay and Nick Kirshner kept the crowd entertained selling 347 lots and with the KMPL support crew working alongside the auctioneers as well as in the office to ensure the day went smoothly. The caterers did a fantastic job serving up brilliant coffees and tasty food to keep the crowds fed and watered.

VENUE 967 Gullies Road, Moonbah NSW 2627

ACCOUNT A Barton

INSPECT 8am on the the day or as otherwise pre-arranged

REGISTER 8am on the day or via pre-registration To pre-register for this auction, please contact our office, supply a scanned copy of your driver's license.

AUCTION Commencing at 9 am | Saturday 12th August 2023

CATERING Provided

TERMS Bidding card system | ID required

PAYMENT On the day

& PICKUP

PAYMENT METHODS Cash & Bank Cheque or Personal Cheque (Must be pre-approved). EFTPOS facilities maybe available on the day. To register for pre-approval to pay with a Personal Cheque, please [click here](#).

BUYERS Please refer to [terms and conditions](#)

Disclaimer: We make no representation and give no warranty as to the accuracy of the preceding information and do not accept any responsibility for any errors or inaccuracies in, or omissions from, the information contained herein (whether negligent or otherwise) and we shall not be liable for any loss or damage howsoever arising as a result of any person acting or refraining from acting in reliance on any information contained herein. The above information has been furnished to us by a third party. We have not verified whether or not that information is accurate and do not have any belief one way or the other in its accuracy. We do not accept any responsibility to any person for its accuracy and do no more than pass it on. All interested parties should make and rely upon their own inquiries in order to determine whether or not this information is in fact accurate. No reader shall rely solely on the information contained in this document as it does not purport to be comprehensive or to render specific advice. This

disclaimer does not purport to exclude any warranties implied by law which may not be lawfully excluded.

Please also note that all photographs relating to this sale are INDICATIVE ONLY and do not show how lots will be sold on the day.

Inventory

FISHING/CAMPING/OUTDOOR STESSI 370 Edgetracker Lite Alloy Boat on homemade trailer; Yamaha 15 Tiller steer outboard motor on stand; Large 2 seater fibre glass and wood canoe; Roof top boat rack (winch style); Engel MT45FS car fridge; Various camping gear; Quantity of fishing gear (including reels, rods, lures); Various outdoor cooking equipment;

ANTIQUES & COLLECTABLES

HORSE SADDLERY

**BUILDING MATERIALS,
WORKSHOP EQUIPMENT &
TOOLS** Large Nuttall metal lathe (3 phase, plus tools to suit); AP Lever folder (Mascot Sydney); Kemppi welder; Pullmax Riveter; Industrial press; Husqvarna 55 Chainsaw; Various fuel cans; Paint cans; Fire hose; Ladders; Drop saws; J.S. Richardson Drill press; Chalmers corner folder; RongFu metal band saw; Numerous hand tools; Numerous air tools; Quantity of aluminium tube (round and angle);

FARMING EQUIPMENT & MATERIALS

GARDEN EQUIPMENT 500T Bonnar Ride on Mower (Mini rider, 6 speed, 190cc Briggs & Straton motor); Masport push mower; Yardman Ride on (needs attention, 15HP Briggs & Straton); STIHL FS38 whipper snippers (bent short);

HOUSEHOLD ITEMS Large Kelvinator fridge; Bar fridges;

MISCELLANEOUS Stage lights; Remote model aeroplanes; Toboggans; Skis;

OUTSIDE ENTRIES

1. I LITCHFIELD

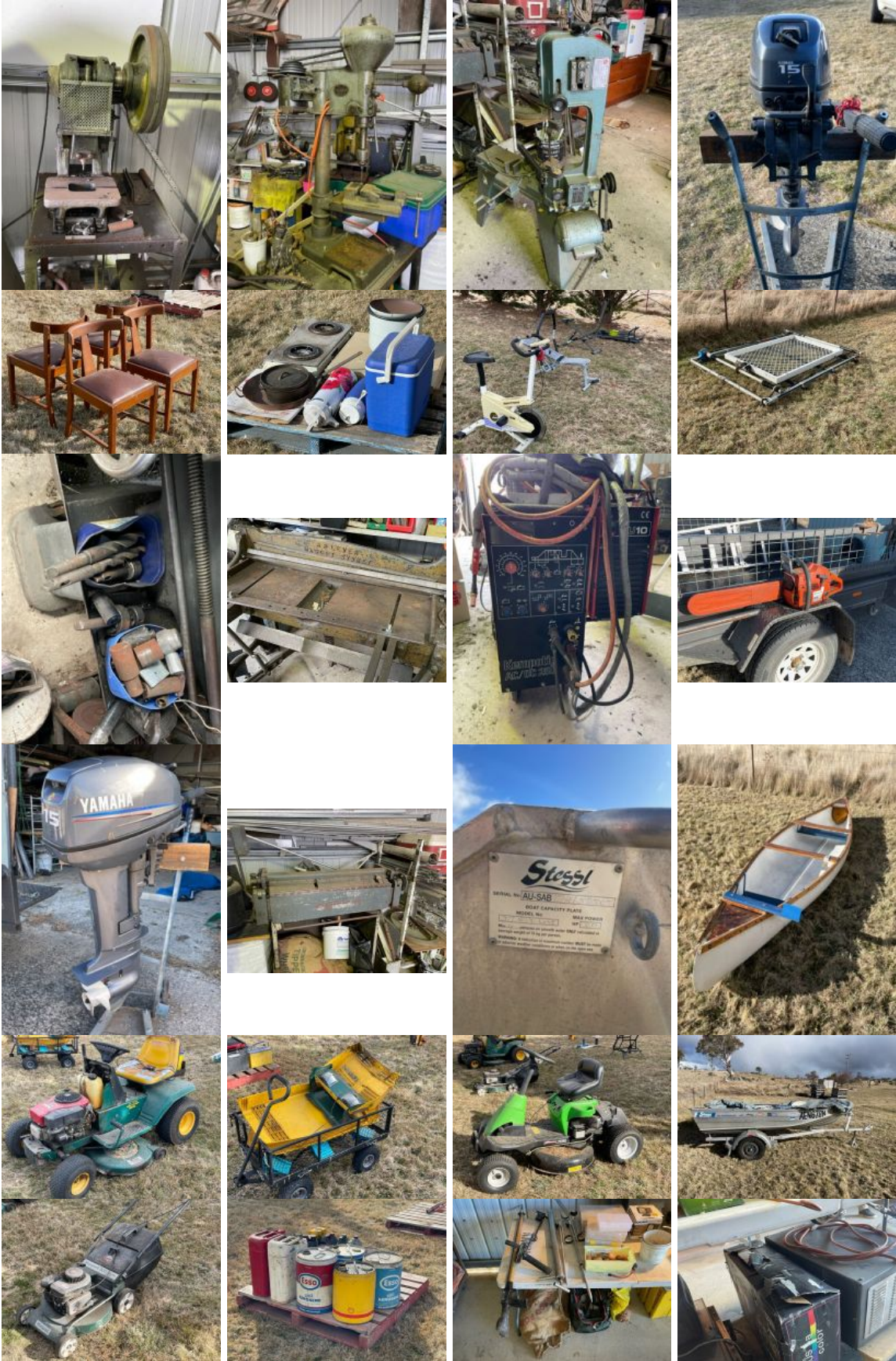
Bench Grinders x 2 (Peerless ¾ HP, small Black & Decker); Angle grinder (Makita + discs); Electric chainsaw sharpener; Stihl 038 Chainsaw; Husqvarna 365 chainsaw in case; 5" Dawn engineer vice; Small wood vice; Echo whipper snipper; Stihl FS 45 Whipper Snipper; Black & Decker drill in cabinet; Brick laying tools; Axes & hatchets; Fencing tools w tool box; Shearing shears; Dagging shears; Skinning knife in leather saddle scabbard; Triton work centerless saw; Makita jig saw; Icon sander; Turner nibbler; Electric drift clamps; Ryobi HW 600 Electric saw; 5 ton Hydraulic jack; Small Hydraulic jack (needs oil); Steel jerry can and pourer; 20L Plastic fuel cans; Fuel siphon; Chainsaw post borer + wood bits; Stanley wood braces + wood bits; Stanley wood planes; Selection wood chisels; Rip and crosscut wood saws; Bowsaws; Small anvil; Bench PTO vice and clamp combination; Wood saw horses; Open ended shifting spanners; Spanners, ring spanners, sockets & bars; 18" Stilson spanner; 7lb Sledge hammer; Splitting axes; Greenfield 15.5 HP ride on mower; Grease guns; Bike ramps; Stihl helmet and protective pants; Car ramps; GB40 Genius power pack; Crowbars; Pick; Coke fork; Garden fork; Trench shovel; Long handle flat shovel; Heavy rake; McLeod tool; Aluminum extension ladders; Wheel barrows; Garden sprinklers; Stock saddle; Various garden tools; Star pickets; Foot netting; Leather rifle scabbard; Leather rifle sling

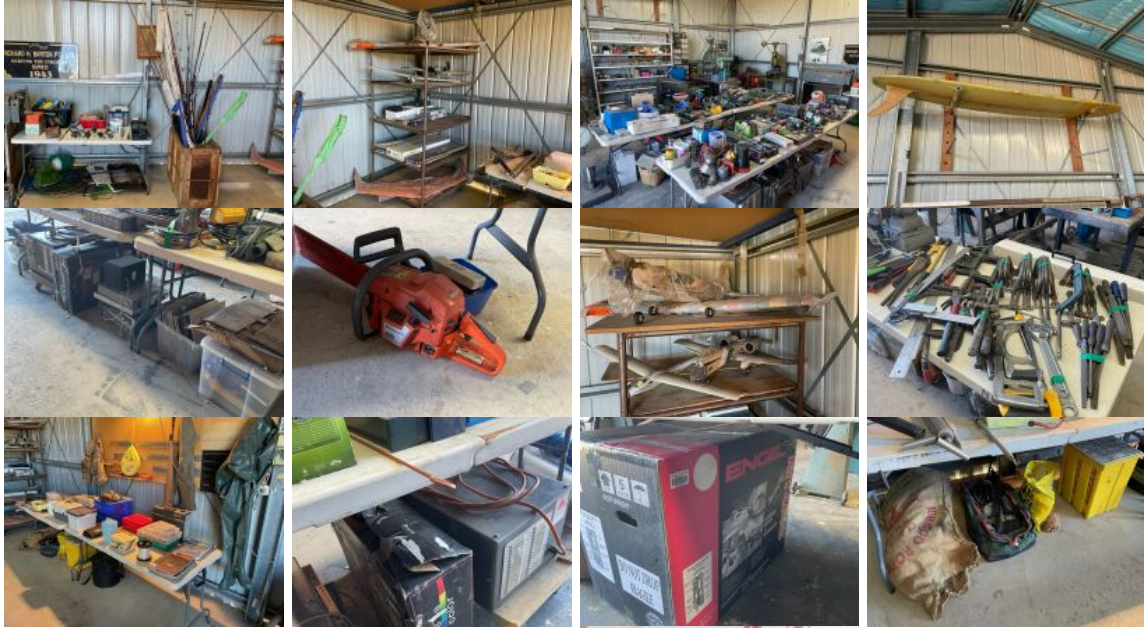
2. M BIEDER

2 x trailers

PLEASE NOTE: ALL PHOTOGRAPHS RELATING TO THIS SALE ARE INDICATIVE ONLY AND DO NOT SHOW HOW LOTS WILL BE SOLD ON THE DAY.







Outside Entry 1 - I
Litchfield

Outside Entry 1 - I
Litchfield



Outside Entry 1 - I
Litchfield



Outside Entry 1 - I
Litchfield



Outside entry 2- M
Bieder



Outside entry 2- M
Bieder